

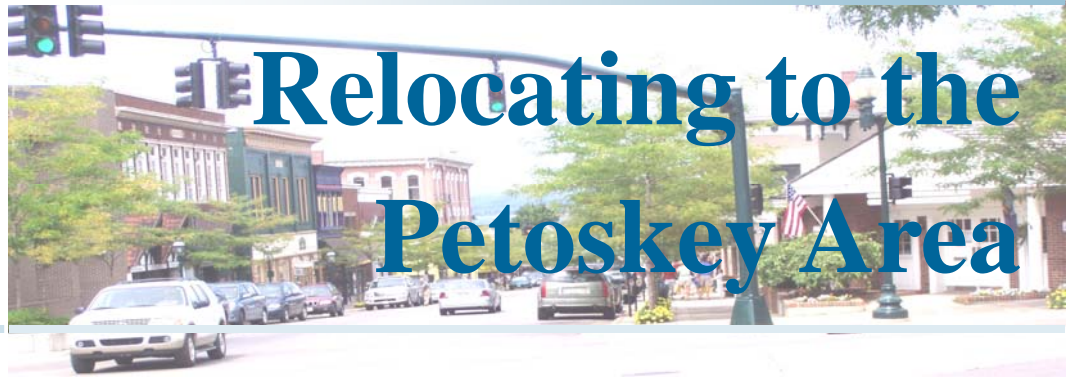
This booklet was created by the Petoskey Regional Chamber of Commerce. For more information regarding the area, here are some helpful websites:

www.petoskey.com

www.petoskeyarea.com

www.petoskey.us

Petoskey Regional Chamber of Commerce



Relocating to the Petoskey Area

The History of Petoskey & Emmet County

Emmet County, so named in honor of Irish Patriot Robert Emmet, is located on the Northwestern tip of Michigan's Lower Peninsula. The County was organized in 1853. The early French fur traders and missionaries called it L'Arbre Croche, or Crooked Tree, after a tall tree overhanging a high bluff which was used as a landmark for approaching canoes.

Emmet County's seat, the City of Petoskey, has had a strong and varied past.

Rambling Victorian homes in the community of Bay View serve as a reminder of great history as a summertime destination of vacationing city dwellers for several generations. On a late fall day in 1873, a reporter from a Grand Rapids newspaper dubbed the Petoskey area "Land of a Million Dollar Sunsets" when he was dazzled by one of our usual, beautiful sunsets as he stepped off the train. By the summer of 1874, Petoskey was a regular stop for many rail lines originating from throughout Michigan. Travelers boarded the trains to escape the

often smoggy, dusty big cities and luxuriate in the fresh air and healing natural springs. Luxury resort hotels were constructed along the rail line as well as depots to accommodate all of the new visitors, including the young Ernst Hemingway on his way to spend summers on Walloon Lake and in Petoskey.

Along the Bear River, water power was harnessed to run sawmills, flour mills, hardwood flooring factories, butter bowl manufacturers and furniture-making facilities.

Little steam ships drove along the bay, making regular routes to southern and northern delivery stops.

Tourism continues to be a major economic force and has grown to include winter attractions as well. The county and city are now a four-season destination offering world class alpine skiing, numerous kilometers of groomed and natural cross-country trails, championship golf courses, all types of water sports, breathtaking Autumn views and an amazing 26-mile bike trail along the shoreline known as the Little Traverse Wheelway.



One of Petoskey's "Million Dollar Sunsets" over Little Traverse Bay.

The City of Petoskey continues a history of quaint shopping and panoramic views.

Northern Michigan Regional Health System leads the pack in health care in Northern Michigan and calls Petoskey home.

Our families love living in Northern Michigan. Our education system is highly respected and includes the Petoskey Public Schools as well as North Central Michigan College.

Table of Contents

Vital Statistics	2
Demographics	3
Employment	4
Housing Statistics	5
Utilities	6
Housing Options	7
Real Estate	8
Education	9-12
Banks	13
Health Care	14
Highlights	15

Average Highs & Lows

January

26° / 14° F

February

28° / 12° F

March

37° / 21° F

April

48° / 33° F

May

60° / 43° F

June

69° / 53° F

July

75° / 59° F

August

74° / 58° F

September

67° / 51° F

October

56° / 40° F

November

42° / 31° F

December

32° / 21° F

Average Showfall

121 inches

Average Rainfall

31 inches

Vital Statistics

*Emmet County
Population*

32,694

Source: 2010 U.S. Census

Labor Force

19,327

Source: Northern Lakes Economic Alliance

Land Area

468 sq. miles

Source: 2010 U.S. Census

Per Capita
Income

\$33,896

Source: Northern Lakes Economic Alliance

 **70 Persons Per Square Mile** 

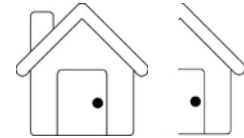
Source: 2010 U.S. Census

*Total Housing Units
(Emmet County)*

21,304

Source: 2010 U.S. Census

Average
Household
Size



1.5

Source: 2010 U.S. Census

Miles From Little Traverse Bay Area To:



Chicago	367	Saginaw	178
Detroit	267	Sault St. Marie	93
Grand Rapids	187	South Bend, IN	299
Lansing	204	Toledo, OH	304
Mackinaw City	33	Traverse City	67
Marinette, WI	247	Toronto, ON	450

Major Highways.....I-75, U.S. 131,
U.S. 31, M-119, M-68

Bus Line.....Indian Trails Bus Line

Airports

Harbor

Springs.....231.347.2812

Pellston Regional(PLN).....231.539.8441

www.pellstonairport.com

Rail Lines.....Tuscola-Saginaw Bay
Railroad

Ports

Charlevoix (30 miles—Lake Michigan)

Cheboygan (30 miles—Lake Huron)

Marinas

Petoskey Municipal Marina....231.347.6691

Bay Harbor Marina.....231.439.2544

Petoskey By the Numbers

Area	Population
Emmet County	32,694
Alanson	738
Harbor Springs	1,194
Mackinaw City	506
Pellston	623
City of Petoskey	5,670
49770 Zip Code (Greater Petoskey)	16,913

Source: www.michigan.gov/documents/cgi

Petoskey By the Numbers

Race	Number	Percent
White	30,375	92.91
American Indian/Alaska Native	1,198	3.66
African American	156	.48
Asian, Pacific Islander, Aleut	182	.55
Hispanic/Latino	429	1.31

Source: 2010 U.S. Census

Natural Resources

Total Acreage (Emmet County)	295,040
Acres of Water (Emmet County)	10,560
Acres of Public Recreation Land	75,667
Acres of State Parks/Recreation	7,903
Acres of State Boating/Fishing Sites	311
Acres of State Forest	67,453
Miles of Great Lakes Shoreline	68
Miles of Rivers/Streams	98
Acres Preserved by Little Traverse Conservancy	39,600
Miles of Preserved Shoreline	98

Source: Harbor Springs/Petoskey Chambers of Commerce Community Profile

Working in the Petoskey Area

Top 10 Employers

Bay Harbor Co., LLC

Bay Bluffs Medical Care Facility

Circuit Controls Corp.

Home Depot USA, Inc.

LTBB Gaming Administration, Inc.

Lowes Home Centers, Inc.

Mid-American Products, Inc.

Moeller Aerospace Technology

Northern Michigan Regional Health System

Wal-Mart Stores, Inc

Principal Employers

American Spoon
www.spoon.com

BOYNE Resorts
www.boyne.com

Circuit Controls Corp.
www.circuitcontrols.com

Kilwin's Quality Confections
www.kilwins.com

LTBB of Odawa Indians
www.ltbodawa-nsn.gov

Manthei, Inc.
www.mantheiinc.com

Michigan Maple Block Co.
www.mapleblock.com

Mitchell Graphics
www.mitchellgraphics.com

Moeller Aerospace Tech

North Central Michigan College
www.ncmich.edu

Northern Michigan Regional Health System
www.northernhealth.org

Odawa Casino Resort
www.odawacasino.com

Petoskey-News Review
www.petoskeynews.com

Petoskey Plastics
www.petoskeyplastics.com

Town & Country Cedar Homes
www.cedarhomes.com

Earning Levels

Management.....37.42

Business/Financial.....28.39

Computer Operations.....24.59

Architecture.....26.11

Physical/Life Occup.....25.00

Community Services.....20.90

Legal.....26.54

Education.....22.26

Art/Design.....16.25

Health Care.....29.53

Health Care Support.....12.64

Protective Services.....17.91

Food Services.....9.87

Maintenance.....11.45

Personal Care.....10.91

Sales.....14.73

Office Support.....14.29

Construction.....18.86

Installation Occup.....17.48

Production Occup.....14.44

Transportation.....13.91

Source: Harbor Springs/Petoskey Chambers of Commerce Community Profile, 2010/2011
Bureau of Labor Statistics (bis.gov.oes/current/oessrcms)

Housing in the Petoskey Area

Housing Costs, Emmet County	
Average Selling Price	\$180,707
Median Selling Price	\$119,950
Units on the Market	1,845

Source: Emmet Association of Realtors

Total Housing Units	18,544	Percent
Occupied Housing Units	12,577	67.8
Vacant Housing Units	5,977	32.2
Seasonal/Recreational	5,039	27.2

Source: Emmet Association of Realtors, 2011

Occupied Housing Units	12,577	Percent
Owner-occupied	9,502	75.6
Renter-occupied	3,057	24.4

Source: www.factfinder.census.gov

Type of Household	Number	Percent
Total Households	12,577	
Family	8,527	67.8
<i>With children under 18</i>	3,982	31.7
Married-Couple Family	7,030	55.9
<i>With children under 18</i>	3,013	24.0
Female Householder, no male	1,067	8.5
<i>With children under 18</i>	702	5.6
Non-Family Household	4,050	32.2
<i>Householder living alone</i>	3,387	32.2
<i>Aged 65 +</i>	1,262	10.0
Average Household Size	2.44	
Average Family Size	2.97	

Source: www.factfinder.census.gov

For more property tax information, visit <https://treas-secure.state.mi.us/ptestimator/ptestimator.asp>

Utilities

If your home and or business is located in or around the City of Petoskey, the City Department of Public Works will provide your water, sewer and electrical service. For more information on City Services, visit www.petoskey.us. If you are located outside of the City of Petoskey, there are many companies that can provide these services.

Electricity

Consumers Energy

1.800.477.5050

www.consumersenergy.com

Great Lakes Energy

1.888.485.2537

www.gtlakes.com

Natural Gas

Great Lakes Energy

1.888.485.2537

www.gtlakes.com

DTE Energy

1.800.477.4747

www.dteenergy.com

Waste Disposal

American Waste

1.800.544.2663

www.americanwaste.org

Little Traverse Disposal

231.487.0780

www.disposalman.com

Waste Management

1.800.796.9696

Recycling

Emmet County is home to an award-winning recycling program that provides weekly, curbside recycling throughout Petoskey and the surrounding areas. This is coupled with 12 different drop-off locations spread across the county. For more information on the Emmet County Recycling Program, visit www.emmetcounty.org

Home Phone

AT&T

1.800.CALL.ATT

www.att.com

Charter Communications

1.888.438.2427

www.charter.com

(The Charter office is located on M-119 across from the Clocktower Plaza)

Cell Phone

AT&T

1.800.CALL.ATT

www.att.com

(The AT&T store is located in the Glen's North Plaza on US 31 N)

Verizon

1.800.922.0204

www.verizon.com

(The Verizon store is located in the Bear Creek Plaza, off US 131 S, near Lowe's)

Cable/Internet

Charter Communications

1.888.438.2427

www.charter.com

Comcast Communications

1.800.COMCAST

www.comcast.com

Housing

Apartments

Bear Creek Meadows

1600 Bear Creek Lane, Petoskey, 231.348.3888, www.bearcreekapartment.com

Glen Haven Apartments - Glen Haven Circle, Petoskey, 231.348.2200

Harbor Village Family Apartments - 1301 Crestview Dr, Petoskey, 231.348.3359 - Some income-based units available, Handicap accessible

Harbor Village Senior Apartments - 1401 Crestview Dr, Petoskey, 231.348.9730 - Senior housing, some income-based units available, Handicap accessible

Hills Investments - Various locations throughout Petoskey, 231.347.4103

Hillside Club Apartments - 501 Valley Ridge Dr, Petoskey, 231.439.5197

Lafayette Park Apartments - 301 Lafayette Ave, Petoskey, 231.347.7911 - Some income-based units available

Liegl Investments - Various locations throughout Petoskey, 231.347.3133

Maple Village Apartments

1695 Meadow Way, Petoskey, 231.347.3755 - Some income-based units available, Handicap accessible

Pinecrest Apartments - 1297 LaChaumiere Rd, Petoskey, 231.348.2200

Riverview Terrace

11 Bridge St, Petoskey, 231.347.2030, www.mhmltd.com

Traverse Wood Apartments - 203 Lafayette Ave, Petoskey, 231.347.6711 - Income-based units available, Handicap accessible

Senior Housing

Independence Village of Petoskey

965 Hager Dr, Petoskey, 231.348.8498, www.seniortvillages.com - Senior Housing, Handicap accessible, various types of specialty amenities available

Harbor Village Senior Apartments - 1401 Crestview Dr, Petoskey, 231.348.9730 - Senior Housing, some Income-based units available, Handicap accessible

Perry Farm Village

4241 Village Circle Dr, Harbor Springs, 231.526.1500, www.perryfarmvillage.com - Senior Housing, various types of specialty amenities available

The Village of Hillside Senior Apartments

311 W. Main St, Harbor Springs, 231.526.7108, www.pvm.org - Senior Housing, various types of specialty amenities available

**Bold type indicates Chamber membership*

Real Estate Offices

Buyer's Broker of Northern Michigan

3280 Woods Way, Petoskey, 231.347.9600, www.buyersbroker.biz

Coldwell Banker Fairbairn Realty

7569 US 31, Alanson, 231.548.9336, www.fairbairnrealty.com

Coldwell Banker Schmidt Realtors

420 Howard St, Petoskey, 231.347.7600, www.cbgreatlakes.com

Harbor Sotheby's International Realty

4000 Main St, Bay Harbor, 231.439.2000, www.harborsir.com

Jack VanTreese & Associates

425 Michigan St, Suite 3, Petoskey, 231.347.3943, www.jackvantreese.com

Lloyd Pedersen, Real Estate Broker

3165 Pete's Way, Harbor Springs, 231.526.6990, www.connectnorth.com

McCune Smith Real Estate

PO Box 833, Petoskey, 231.347.5080, www.mccune-smithrealestate.com

Pat Cormican, Realtor

#7 Penn Plaza, Petoskey, 231.347.1780

Prudential Preferred Properties

228 E Mitchell St, Petoskey, 231.347.7800, www.pprmi.com

Real Estate One of Petoskey

1349 US 131 S, Petoskey, 231.347.7700, www.reomich.com

Education

“Our community has built a wonderful tradition of excellence in teaching and learning along with a fine tradition of excellence in academics, arts, athletics and community service. Please continue to be assured that we appreciate and embrace the opportunity and challenge

of working hard for our students each and every day. Through board leadership we are committed to student achievement and ongoing improvement. We will continue to emphasize fiscal responsibility, accountability and quality instruction for all.”



John P. Scholten, Ed.D.
Superintendent of Schools

The school district of the Public Schools of Petoskey encompasses an area of approximately 170 square miles. The district includes a four-year high school, a middle school for grades 6 through 8, and five (5) elementary schools, one of which is an accredited Montessori School. Petoskey High School, which is accredited by the North Central Association, also includes an area Career & Technical Education Center that accepts students from nearby school districts.

The Petoskey area schools are a proud part of the Char-Em Intermediate School District. The Char-Em ISD serves over 11,450 students in 11 public school districts, 6 private schools, and 3 public school academies.

Elementary Schools

Central Elementary School

410 State St., Petoskey, 231.348.2110 www.petoskeyschools.org - Grades K-5

Lincoln Elementary School

616 Connable Ave., Petoskey, 213.348.2120 www.petoskeyschools.org - Grades K-5

Ottawa Elementary

871 Kalamazoo St., Petoskey, 231.348.2130 www.petoskeyschools.org - Grades K-5

Petoskey Montessori Elementary

1560 E. Mitchell St., Petoskey, 231.347.5331 www.petoskeymontessori.org - Grades Pre-K thru Grade 6

Sheridan Elementary School

1414 Howard St., Petoskey, 231.348.2100 www.petoskeyschools.org - Grades K-5

St. Francis Xavier Catholic School

414 Michigan St., Petoskey 231.347.3651 www.jeromesoftware.com/stfrancis - Grades Pre-K thru Grade 8

Education (continued)

Middle Schools

Petoskey Middle School

801 Northman Dr., Petoskey 231.347.5331 www.petoskeyschools.org - Grades 6-8

St. Francis Xavier Catholic School

414 Michigan St., Petoskey 231.347.3651 www.jeromesoftware.com/stfrancis - Grades Pre-K thru Grade 8

High School

Petoskey High School

1500 Hill St., Petoskey, 231.348.2160 www.petoskeyschools.org - Grades 9-12

Private/Charter K-12 Schools

Concord Academy of Petoskey

2468 Atkins Rd., Petoskey, 231.347.6800 www.concordpetoskey.com

Harbor Light Christian School

8333 Clayton Rd., Harbor Springs, 231.347.7859 www.harborlightchristian.org

Other Neighboring Communities with K-12 Schools

Harbor Springs - www.harborps.org

Alanson - www.alansonvikings.net

Pellston - www.pellstonschools.org

Inland Lakes (Indian River) Public Schools - www.inlandlakes.org

Education (continued)

Public Schools of Petoskey—Measured Up

MEAP/MME Proficiency Level Percentages 2010-11

		Reading					Math				
		Total	I	II	III	IV	Total	I	II	III	IV
3rd	District	94	55	38	6	1	98	69	29	8	0
	State	87	42	45	12	2	95	53	43	5	0
4th	District	93	52	41	7	0	97	63	34	3	0
	State	84	31	53	4	2	91	43	49	8	0
5th	District	91	56	35	5	4	87	53	35	13	1
	State	85	44	41	9	5	20	45	35	18	3
6th	District	92	49	43	6	2	92	61	31	8	0
	State	84	37	47	11	5	84	46	38	14	1
7th	District	87	45	42	9	4	96	66	30	4	0
	State	79	33	46	10	10	85	44	35	15	1
8th	District	87	44	43	11	1	92	57	35	7	1
	State	82	32	50	14	4	78	43	35	17	5
11th	District	73	4	69	19	8	66	14	52	11	23
	State	63	3	60	22	14	52	13	39	15	33

Level I is the highest and IV is the lowest proficiency rating.

District School Improvement Progress

Goal 1: All students' competence in reading will improve	Outcome(s): District-wide, 85% of our students are proficient in reading (7.2% above the state average)
Goal 2: All students' competence in writing will improve	Outcome(s): District-wide, 61% of our students are proficient in writing (19.05% above the state average)
Goal 3: All students' competence in math will improve.	Outcome(s): District -wide, 84% of our student are proficient in math (7.37% above state average)
Goal 4: All student' competence in science will improve	Outcome(s): District -wide, 86% of our students are proficient in science (13.1% above the state average)
Goal 5: All students' competence in social studies will improve	Outcome(s): District-wide, 89% of our students are proficient in social studies (14.2% above the state average)

For more information on the Public School of Petoskey visit:
www.petoskeyschools.org

For more detailed information is on the Annual Education Report website at:
www.petoskeyschools.org/slanec.tl.m/aer_cal/

Education (continued)

Higher Education

“A community that has a college nearby is very fortunate. Residents can enjoy many enriching experiences that only a college can provide. They can walk our campus and natural area, use our library, attend our many lectures, exercise in our gym, take a class or pursue a degree. North Central Michigan College is a true partner with the businesses, schools, non-profit organizations and people of Petoskey.”



Cameron Brunet-Koch, Ph.D.
President, North Central Michigan College



North Central Michigan College offers an exceptional education close to home and family. Enjoy a small-town setting and unmatched natural beauty while you take the next step on your own individual path to success.

To begin, take a tour of the North Central Campus or view the college website, www.ncmich.edu.

North Central offers programs of study in art, business administration, criminal justice, early childhood education, information technology, health sciences and natural sciences. The college also offers basic coursework for students who wish to transfer to senior institutions. Transfer agreements between colleges ensure the transferability of courses. Curriculum guides and an important website, www.macrao.org, can be used to verify the transferability of courses.

In addition, North Central and six universities have formed a University Center partnership that provides significant benefits and opportunities for students. Partnering with North Central are Central Michigan University, Ferris State University, Lake Superior State University, Lawrence Technological University, Michigan State University and Spring Arbor University.

North Central offers students many services to help them succeed in college. Counseling, advising and tutoring services are readily available at no charge. Faculty members are eager to help their students succeed in their classes. Students who would like to live on campus can apply for a room in the well-equipped residence hall. The Student and Community Resource Center offers a gym and fitness center. Student clubs and organizations provide extra-curricular opportunities.

Banks

Bank of Northern Michigan

406 Bay St, Petoskey, 231.487.1765, www.tbonm.com

Bay Winds Federal Credit Union

2215 E Mitchell Rd, Petoskey, 231.347.1620; 1633 US 131 South, Petoskey, 800.638.1182, www.baywindsfcu.com

Chase Bank

1121 US 31 North, Petoskey, 231.348.6238; 310 Michigan St, Petoskey, 231.348.6231; 320 Howard St, Petoskey, 231.347.7711; 677 W Mitchell St, Petoskey, 231.348.6251; 7645 S State Rd, Harbor Springs, 231.526.6243, www.chase.com

Citizens National Bank

8011 S US 31, Alanson, 231.548.2265, www.cnbismybank.com

Fifth Third Bank

2318 M-119, Harbor Springs, 231.348.0308; 500 Madison, Petoskey, 231.348.0307; 300 E Mitchell St, Petoskey, 231.439.8500, www.53.com

First Community Bank

200 E Main St, Harbor Springs, 231.526.2114; 115 E Lake St, Harbor Springs, 231.526.2747; M-119 & Pleasantview Rd, Harbor Springs, 231.347.5521; 330 E Mitchell St, Petoskey, 231.348.1800; 2201 E Mitchell St, Petoskey, 231.348.1844; 930 Spring St, Petoskey, 231.347.2082, www.firstcb.com

First Federal of Northern Michigan

6232 River St, Alanson, 231.548.2933, www.first-federal.com

Huntington National Bank

1368 US 131 South, Petoskey, 231.347.5107, www.huntington.com

Northwestern Bank

300 Howard St, Petoskey, 231.347.4761; 325 E Lake St, Petoskey, 231.348.2029; 919 Spring St, Petoskey, 231.347.5531, www.nwbank.com

PNC Bank/National City

401 Bay St, Petoskey, 231.347.1951

St Francis X Federal Credit Union

2140 M-119, Petoskey, 231.347.8480; 224 State St, Petoskey, 231.347.8480; 7681 S State Rd,

Health Care

“At Northern Michigan Regional Health System, our mission is to provide health-care as we expect for our own family. Our care philosophy supports the creation of a healing environment for both our patients and their families that promotes not only physical wellness, but also emotional, cultural, and spiritual health. As partners in your care, our focus is to give you the information and educational opportunities you need to make the best healthcare choices for you, whether you are a patient at Northern Michigan Regional Hospital, you have been discharged, or you are simply focused on living well.”



Reezie DeVet
President & CEO



Northern Michigan Regional Health System is a non-profit organization that employs more than 1,700 colleagues who are committed to providing a full continuum of patient-centered, specialized care to residents in 22 counties. With more than 15 affiliates and regional partners, the flagship of Northern Michigan Regional Health System is Northern Michigan Regional Hospital, a 202-bed, regional referral center located in Petoskey with a medical staff of nearly 200 physicians representing nearly all medical and surgical specialties, enabling full-service care close to home through a full spectrum of services including health screenings, educational programs, and clinical trials.

Awards

ANCC Magnet Recognition®

Northern Michigan Regional Hospital achieved Magnet® status on Wednesday, April 20, 2011, placing it among only 6.6 percent of hospitals throughout the country and among only 14 in the state of Michigan to receive recognition for nursing excellence.

2011 CareChex

Northern Michigan Regional Hospital has been named Number One in the Nation for unparalleled medical excellence and patient safety for Vascular Surgery. Test Regional Hospital has also been named among the Top 10 percent of Hospitals in the Nation for medical excellence in cancer care, spinal surgery, women’s healthcare, overall surgical care, and for overall hospital care by CareChex.

Top 25 Connected Healthcare Facilities

Northern Michigan Regional Hospital was recently named a 2010 Top 25 Connected Healthcare Facilities by Health Imaging & IT magazine. The annual list recognizes hospitals, health systems, imaging centers, and physician practices that seamlessly integrate imaging and IT systems, provide physicians with immediate, anywhere access to patient data, and demonstrate return on investment, as well as high patient and staff satisfaction.

Northern Michigan Regional Health System, an award-winning health care facility, leads the community in patient care and health care professionals. Their health system is comprised of nearly 200 physician specialists dedicated to providing care when and where their patients need it the most, all throughout the region. In addition to the Northern Michigan Regional Health System, the Petoskey area boasts physicians and specialists from almost any facet of health care, including:

- Acupuncture
- Acute Rehabilitation
- Addiction Treatment
- Adult Day Care
- Allergies & Asthma
- Anesthesia
- Arthritis
- Assisted Living
- Audiology
- Cardiac Rehabilitation
- Cardiology
- Chiropractic
- Cosmetic & Plastic Surgery
- Counseling
- Dental Laboratories
- Dentists
- Dermatology
- Emergency Services
- Endocrinology
- Family & General Practice
- Gastroenterology
- Health Education
- Home Health Care
- Hospice/Palliative Care
- Infectious Diseases
- Internal Medicine
- Massage Therapy
- Mental Health Services
- Nephrology
- Neurology
- Neurosurgery
- Nursing Homes
- Obstetrics & Gynecology
- Occupational Therapists
- Oncology & Hematology
- Ophthalmology
- Optometry/Opticians
- Oral Surgery
- Orthodontics
- Orthopaedics
- Otolaryngology
- Pain Management
- Pathology
- Pediatrics
- Physical Therapy
- Podiatrists
- Psychology & Psychiatry
- Pulmonary Medicine
- Radiation Oncology
- Radiology
- Rehabilitation Service
- Rheumatology
- Sleep Medicine
- Surgery
- Urgent Care
- Urology

The Petoskey area also is home to a very special group of living facilities, our nursing homes and assisted living facilities. They provide high quality care to many of our elderly relatives. Some of the facilities are:

Bay Bluffs - 750 E Main St, Harbor Springs, 231.526.2161

Bortz Health Care - 1500 Spring St, Petoskey, 231.347.5500

Boulder Park Nursing & Rehabilitative Center - 14676 W Upright, Charlevoix, 231.547.1005

Independence Village Assisted Living - 965 Hager Dr, Petoskey, 231.348.8498, www.seniortvillages.com

Sunnybank Assisted Living - 615 Petoskey Ave, Charlevoix, 231.547.2599; 2000 E Mitchell St, Petoskey, 231.348.2600, www.sunnybankassistedliving.com

We have a very active Council on Aging, which helps run the Friendship Center of Emmet County, Petoskey's Senior Center. Through the council and senior center, elderly and aging citizens can be provided blood pressure checks, blood sugar checks, Meals on Wheels, rental of medical equipment, some medical/personal assistance, discounted transportation on the center's bus, regular events, volunteering opportunities, special hot meals, entertainment, and much more. The Council on Aging can be reached at 231.347.3211. They also have facilities in Harbor Springs, Alanson, Pellston, and Brutus.

For more information on health care in the Petoskey area, visit www.northernhealth.org or download a printable copy of the Northwest Michigan Health Directory at www.petoskeynews.com/healthdirectory.

What do you enjoy most about living in the Petoskey area?

“The Petoskey area is undeniably one of the most beautiful places in the State of Michigan, from the beaches to the trails; the natural benefits of living “up north” were some of the top reasons we chose to move to the area. But what has really made this area home are all of the people we’ve met. The Petoskey area is home to some of the nicest and most welcoming people around. They’ve made us feel like locals from the get go and that just can’t be beat.”



John Blossey

“Our natural resources, the beauty of our lakes and rivers, wooded areas and trailways. We are so fortunate to have these areas for boating, sailing, biking, walking, skiing and just enjoying the outdoors or northern Michigan....something to do during all seasons. The sense of community and the people. There are so many welcoming organizations with which to get involved...including the Chamber of Commerce, service organizations and non-profits who openly embrace new volunteers. It is a wonderful way to work side by side with like-minded individuals and feel so good about supporting your community. It is a community where the people are very friendly and welcoming.”



Chris Etienne

“I love living in Petoskey because there is so much to do. My favorite thing to do in the winter is to meet all of my friends at the Winter Sports Park and go ice skating and sledding. It’s also really fun to go tubing and skiing at Nubs Knob and Boyne Mountain. In the summer I love meeting up with my friends at the Petoskey State Park to go swimming and play beach volleyball. The great thing about living downtown is that you can walk with your friends and get ice cream, go shopping and even play soccer in Pennsylvania. I LOVE living in Petoskey.



GiGi Seagren

“I love taking an afternoon break from work and walking three blocks from downtown to the Bear River trails and whitewater kayak park. My stress melts away hiking along the river in the woods, continuing past the salmon anglers, and finally walking out onto the break wall into Lake Michigan. When I return to my desk my head is clear and I’m ready to tackle anything!”



Dylan Valade

“There are so many family benefits to living in the Petoskey area. There are great schools and healthcare. It’s safe, clean environment. And there’s plenty of fresh air and natural beauty. All we have to do is within 10 or 15 minutes instead of being two to three hours away. It’s truly like being on vacation everyday – and what more could you ask for.”



Dan Rasmussen

“Because I traveled so much during my professional career, I did not have time to enjoy a community. The Petoskey area has far exceeded my expectations as to what retirement could be. Deanna (my wife) & I relocated here in 2004 and have made wonderful friends; many of them will be lifelong. I joined and became active in the Rotary Club of Petoskey. Rotary provided the conduit for me to be involved in SCORE and other meaningful mentoring activities. My wife is an adjunct professor at NCMC. In short, we could not be happier with our decision to call Petoskey our home - it is about the people!”



Bill Collins

“I moved away from Petoskey 15 years ago before returning recently with my family. I love that Petoskey has a great combination of culture in the form of arts and education, accessible outdoor adventure, and is a great place to raise kids. I have lived in a lot of different places and have found it rare to have all three.”



Dana Andrews

Raising my daughters Gabriella and Sofia here. We relocated from New York City just over three years



ago. It was important to my husband Jeff and I to raise our children where they can be active and connected within their community. They enjoy planting flowers downtown with their school, meeting friends in the park, skiing and volunteering their time to help others. They are thriving here in so many ways.

Tracy Bacigalupi

“I love the trails and pathways—we have dozens of choices for hiking, biking, skiing and snowshoeing. The beaches and waterways are also a great feature to the area—from ocean-like lakes to streams and rivers there are a lot of options for boating and watersports. The schools in the area both public and private are wonderful. We also have a great fine arts and music community here—especially the award-winning music programs at the Petoskey schools. Another thing I love about Petoskey is the diverse selection of shops and restaurants with goods for home and the family in our charming downtown.



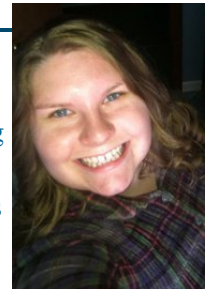
Kate Scollin

“My wife Kasey and I always dreamed of living up north, but thought it would only happen with retirement. In 2005, our dream came true with a job opportunity opened up here. We are both avid mountain and road bikers and this allows us to enjoy this an many other outdoor activities including boating on the inland water way, skiing at Nub’s Nob and fishing in Little Traverse Bay and the many lakes around Petoskey.”



Bill Marshall

“What I love most about Petoskey is the beauty of our Great Lakes. I love the beautiful weather we have during the Spring, Summer and Fall months. I also love the people of this community—everyone here is very friendly and it’s a great place to grow up. I also love the fact that I can attend North Central Michigan College right here in town and get my 4 year degree from LSSU—allowing me to save on my education and live in a place I LOVE!”



April Wandrie

Other Community Highlights

- Emmet County is host to one of the most award-winning recycling facilities in Michigan, the Emmet County Transfer Station. Most residents in the Petoskey area are provided with weekly curbside recycling pick-up at no charge. When visiting the transfer station, you can recycle anything from building materials, to clothing, electronics, and all of the traditional recycled goods.
- Petoskey has a new Community Garden, located on Sheridan Street. Residents can rent a plot in the community garden to grow vegetables and fruit, with sprinklers and compost available for use. Many area farms are now providing CSAs, where you can purchase assorted boxes of produce on a regular schedule throughout the season.
- Northern Michigan is home to a wonderful group of Farm Markets. The City of Petoskey hosts one throughout the summer in downtown Petoskey. They are held on Fridays from 8:30 am to 1:00 pm on the 400 block of Howard Street.
- The Little Traverse Conservancy helps to protect a large acreage throughout northern Michigan. Their network of trails afford great views, and wonderful spots for hikes, snowshoeing, and cross country skiing. Throughout the year, the Conservancy hosts a number of events to introduce the public to their facilities. They can be found at www.landtrust.org.
- The Crooked Tree Arts Center, located in Downtown Petoskey, hosts a gallery with rotating exhibits, a 300-seat music theater, sales gallery, art lessons, music lessons, wine tasting events, and much, much more. The Crooked Tree Arts Foundation hosts a number of gala events throughout the year.
- The Little Travers Civic Theatre brings a taste of the theater to northern Michigan. This merry band of thespians have presented works from Shakespeare, to recent Broadway hits. But, a majority of the time, they will leave you in stitches with their antics and not-so-serious performances.
- World-class dining - northern Michigan offers any foodie a run for their money. We have gourmet shops, natural food stores, and fine dining restaurants.
- Local Art –Drive down any street or back road in northern Michigan and you will most likely run into a local artists' gallery. In downtown Petoskey, the Crooked Tree Arts Center, Stafford's Gallery, Northern Michigan Artists Market, Shadetree Studio, and Ward & Eis Gallery offer the perfect start for your art journey.
- The Little Traverse Wheelway winds along the Lake Michigan Shoreline between Charlevoix and Harbor Springs. This 26-mile paved pathway is perfect for biking, jogging, running, or walking. Open year-round, it is the perfect place to catch wonderful views of Lake Michigan that can't be seen from the road. The Petoskey State Park and the Bob-In Again are just two of the many stops that are required by most families pedaling along the trail.
- A new addition to the Petoskey Parks Department, the Bear River Recreation Area now offers miles of hiking trails, walking paths, pedestrian bridges, and picnic spots. They have installed new restroom facilities along the pathway for public use. In addition to the new pathway, the topography of the Bear River has changed to include more white-water opportunities for kayakers and canoes. Destined to be a must-see for white-water enthusiasts.
- The Petoskey State Park is a tradition for many area residents. The miles of sandy beach are the perfect place for a lazy summer afternoon, an evening stroll, or an afternoon of Petoskey Stone hunting.
- The Little Traverse Regional Historical Society is a very active group in the area, interesting in preserving the rich history of resorting and vacationing in the Petoskey Area. They maintain a museum in a former railroad depot located on Lake Michigan in the Bayfront Park.
- The Bay View Association is a Methodist resort located in Petoskey. Their residents travel here every summer and host a number of music, education, and sport opportunities.
- Festival on the Bay, Art in the Park, and the Emmet County Fair - these are just a few of the many festivals and events that happen through the summer in the Petoskey area. Events also include an antique fair, sidewalk sales, craft show, gallery tours, and more.

Bringing the Business Community Together

The Petoskey area boasts a vibrant and active business community. At the center is the Petoskey Regional Chamber of Commerce, a business advocacy organization that has been in operation since 1920. The chamber boasts a membership of around 750-businesses and a full-time staff of four. The chamber office is centrally located at Mitchell and Howard Streets in the heart of Downtown Petoskey and is open six-days/week throughout the year as a Visitor Information Center. The chamber offers an array of programming to support local businesses and it hosts community events that serve as a draw to the area. For a complete list of chamber programs, visit www.petoskey.com.



Downtown Petoskey is an historic, authentic downtown lined with locally-owned shops, boutiques, galleries, and restaurants. There are around 170-businesses in all in Downtown Petoskey which is known as the Historic Gaslight Shopping District. The downtown boasts one of the few remaining downtown J.C. Penney stores. Learn more at www.petoskeydowntown.com.

Beyond the center of town you'll find a number of shopping centers that feature many of the nationally-named stores of which you are familiar: Wal-Mart, K-Mart, Meijer, Lowe's, the Home Depot, Pier One, Walgreen's and Peebles are a few of the examples of stores located in the Petoskey area. In addition, there are countless places to eat including many of the national chains as well as a large number of locally-owned favorites.

At the center of the entertainment scene is the Odawa Casino Resort which is a full-service casino enhanced with restaurants, a night club, and occasional concert performances. Other restaurants and saloons in town also feature live entertainment and dancing. There is a bowling alley in the Petoskey area and an eight-screen movie theatre.

While tourism and "resortism" are the largest contributors to the local economy, the Petoskey region is diverse in that it also supports light manufacturing, agriculture, and a strong service-sector.

Carlin Smith
President, PRCC



Mission - To help businesses in the Petoskey region succeed while protecting our community's quality of life and fostering responsible growth.

Networking - People buy products and services from people they know. Chamber networking events such as Business After Hours, Connecting Women in Business, Breakfast for Champions and others help you to get to be known in the business community and enhance relationships to help you increase business. Sponsorship opportunities at these events have great promotional value.

Business Promotion - Members of the Petoskey Regional Chamber of Commerce have access to numerous ways to promote their business or organization, just by virtue of being a chamber member. Promotion opportunities include: Referrals, ribbon cutting, anniversary, and visitors guide listings just to name a few.

Economic Development - Business recruitment and retention are essential to the survival of our chamber member businesses and organizations. The Petoskey Regional Chamber of Commerce is committed to helping to nurture our local economy through strong downtown programs and services, promoting quality air service, advocating for better roads, and helping members get stronger through our Chamber University education programs. We also advocate on key issues impacting business at the local, state, and national level. Members are kept "in the know" on local events and issues through our Weekly E-Mail product.

Tourism - Tourism is vital to this region's economy. The Petoskey Regional Chamber of Commerce hosts a Visitor's Information Center on a highly visible intersection in Downtown Petoskey. This center is open six days per week, Nov. through May, and seven days per week May through October. The Chamber also publishes the annual Petoskey Area Visitor's Guide and utilizes their exclusive Portable Visitor Information Kiosk at major community events.

Community - Quality of life issues are also critical to a healthy business community. The Petoskey Regional Chamber of Commerce helps to enhance the quality of life in Petoskey by offering a full schedule of quality events, building our future community leaders with Leadership Little Traverse, hosting the Annual State of the Community Luncheon, and serving as a resource information outlet for key community information.

For more information or on how to join the Petoskey Regional Chamber of Commerce visit www.petoskey.com



Petoskey Regional Chamber
of Commerce

401 E Mitchell St
Petoskey, MI 49770
231.347.4150 - Phone
231.348.1810 - Fax
chamber@petoskey.com
www.petoskey.com



Follow us on Facebook at:
www.facebook.com/chamberpetoskey

Other Useful Websites

www.nwmcog.org - The Northwest Michigan Council of Governments webpage is a great resource for demographic and employment information.

www.petoskeynews.com - The online website for our local paper the Petoskey News-Review.

www.thephoneguide.com - Our local phone directory has an online version that proves to be very helpful.

www.petoskeydowntown.com - Visit the Downtown Petoskey website for a list of events and retail/dining establishments.

www.charemunitedway.org - The Char-Em United Way hosts a great list of volunteering opportunities in northern Michigan.

www.charemisd.org - The website for the Intermediate School District.

www.emmetcounty.org - The Emmet County website can provide you with information on services and governmental bodies in Emmet County.

www.northernlakes.net - The Northern Lakes Economic Alliance is a great resources for communities and entrepreneurs to create and retain jobs in Antrim, Charlevoix, Cheboygan & Emmet Counties.

Thank you for your interest in moving to the Petoskey area. We hope that the information enclosed was helpful to you. If you find that you have additional questions, please contact us by phone or email, and we'll be happy to help. We hope that you find the Petoskey area as enjoyable of a place to live as we do.

Sincerely,

The Staff of the Petoskey Regional Chamber of Commerce